



## 2018-19 District Report Card for Providence

### Number of Schools (2018-19 School Year)

42

#### School Counts By Grade Level

PK-3/Elementary	5
Elementary	18
Elementary/Secondary	1
Middle	7
Secondary	11

### Rhode Island Department of Elementary and Secondary Education Angélica Infante-Green, Commissioner

The Rhode Island Report Card is a central platform for data and information about school, district, and state education performance in Rhode Island. Report Cards are required under the Every Student Succeeds Act (ESSA), the federal education law, and Rhode Island's approach has been praised nationally for its transparency, accessibility, and holistic approach to school accountability. Within this platform, students, parents, community members and all Rhode Islanders can learn more about how schools are performing on a wide range of metrics, including state assessments, student and teacher chronic absence, and participation in advanced coursework, as well as survey data on school climate and culture.

### Number of Students (On October 1, 2018)

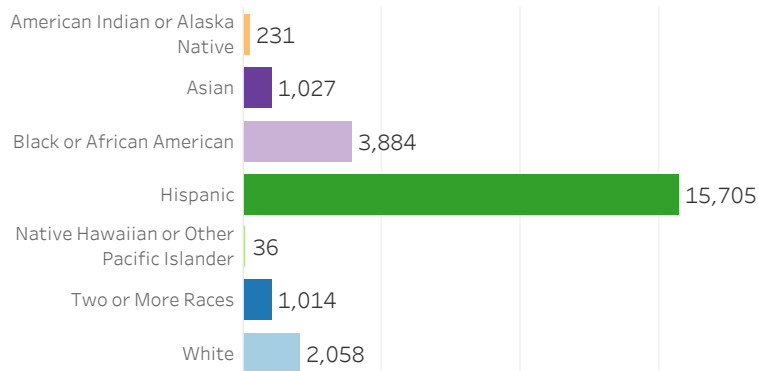
23,955

### Number of Educators (On October 1, 2018)

2,150

### Student Demographics

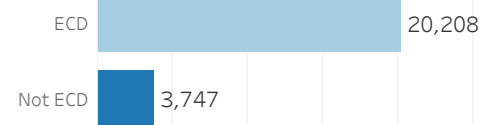
#### Race/Ethnicity



#### Gender

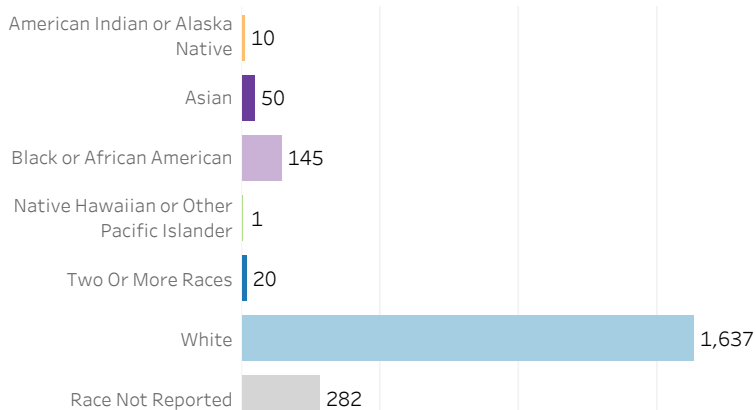


#### Economically Disadvantaged

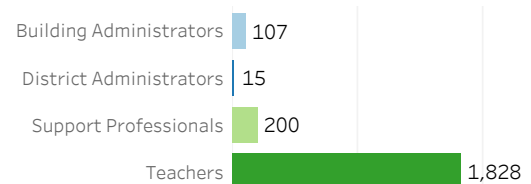


### Educator Demographics

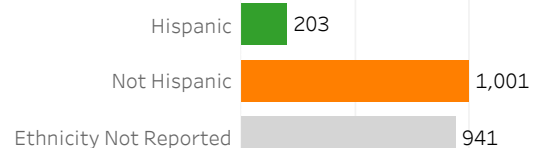
#### Race



#### Educator Type



#### Ethnicity



Note: Totals by educator race and ethnicity may be lower than educator type totals because an educator may be in more than one educator type assignment.

## Providence School Accountability

Accountability determinations by school are below. Go to the individual school page to see them displayed on the star rating chart. Continue through the tabs in this section to compare this district's schools on each indicator.

### Accountability Determinations by School

Grade Span	School	Stars	Reason	
Elementary	Alan Shawn Feinstein..	2	Achievement and Growth	
	Alfred Lima, Sr. Elem..	1	Achievement and Growth	This school was identified for Comprehensive Support and Improvemen..
	Anthony Carnevale El..	2	Achievement and Growth	
	Asa Messer Elementa..	2	Achievement and Growth	
	Carl G. Lauro Element..	2	Achievement and Growth	
	Charles N. Fortes Ele..	1	Achievement	
	Dr. Martin Luther Kin..	2	Achievement and Growth	
	Frank D. Spaziano Ele..	3	Achievement and Growth	
	George J. West Eleme..	2	Achievement and Growth	
	Harry Kizirian Elemen..	1	Achievement and Growth	
	Leviton Dual Languag..	3	Achievement and Growth	
	Lillian Feinstein Elem..	2	Achievement and Growth	
	Mary E. Fogarty Elem..	2	Achievement and Growth	
	Pleasant View School	3	Achievement and Growth	
	Reservoir Avenue Sch..	3	Achievement and Growth	
	Robert F. Kennedy Ele..	3	Achievement and Growth	
	Robert L. Bailey IV, Ele..	1	Achievement and Growth	
	The Sgt. Cornel Young..	2	Achievement and Growth	
	Vartan Gregorian Ele..	2	Achievement and Growth	
	Veazie Street School	2	School Quality & Student Suc..	
	Webster Avenue Scho..	3	Achievement and Growth	
	William D'Abate Elem..	3	Achievement and Growth	
Middle	Esek Hopkins Middle ..	2	Achievement and Growth	
	Gilbert Stuart Middle ..	1	Achievement and Growth	This school was identified for Comprehensive Support and Improvemen..
	Governor Christopher..	1	Achievement and Growth	This school was identified for Comprehensive Support and Improvemen..
	Nathan Bishop Middl..	1	Achievement and Growth	This school was identified for Comprehensive Support and Improvemen..
	Nathanael Greene Mi..	2	Achievement and Growth	
	Roger Williams Middl..	2	Achievement and Growth	
	West Broadway Midd..	1	Achievement and Growth	This school was identified for Comprehensive Support and Improvemen..
High	360 High School	1	Achievement and Growth	This school was identified for Comprehensive Support and Improvemen..
	Academy for Career E..	1	Achievement and Growth	
	Central High School	1	Achievement and Growth	This school was identified for Comprehensive Support and Improvemen..
	Classical High School	5	Achievement and Growth	
	Dr. Jorge Alvarez Hig..	1	Achievement and Growth	This school was identified for Comprehensive Support and Improvemen..
	E-Cubed Academy	2	Achievement and Growth	
	Evolutions High School	1	Achievement and Growth	
	Hope High School	1	Achievement and Growth	This school was identified for Comprehensive Support and Improvemen..
	Mount Pleasant High ..	1	Achievement and Growth	This school was identified for Comprehensive Support and Improvemen..
	Providence Career an..	1	Achievement and Growth	
	William B. Cooley, Sr. ..	1	Achievement and Growth	This school was identified for Comprehensive Support and Improvemen..
Nonstanda..	Times2 Academy	3	Achievement and Growth	

## Providence School Accountability

Accountability determinations by school are below. Go to the individual school page to see them displayed on the star rating chart. Continue through the tabs in this section to compare this district's schools on each indicator.

### Subgroups Identified for Targeted Support and Improvement (TSI) and/or Additional Targeted Support and Improvement (ATSI):

A subgroup identified for TSI or a 'low-performing subgroup' is a subgroup that would earn one star if it were its own school. A subgroup identified for ATSI would be identified for Comprehensive Support and Improvement if it were its own school.

School	Group	TSI Reason	ATSI Reason
360 High School	Economically Disadvantaged	Achievement & Growth	n/a
	English Learners	Achievement & Growth	Achievement & Growth
Academy for Career Exploration (A...	Hispanic	Achievement & Growth	n/a
	Economically Disadvantaged	Achievement & Growth	n/a
Alan Shawn Feinstein Elementary at Broad Street	Hispanic	Achievement & Growth	n/a
	Black or African American	Achievement & Growth	n/a
	Students with Disabilities	Achievement & Growth	Achievement & Growth
Alfred Lima, Sr. Elementary School	White	Achievement	n/a
	Black or African American	Achievement & Growth	Achievement & Growth
	Economically Disadvantaged	Achievement & Growth	Achievement & Growth
	English Learners	Achievement & Growth	Achievement & Growth
	Hispanic	Achievement & Growth	Achievement & Growth
Anthony Carnevale Elementary School	Students with Disabilities	Achievement & Growth	Achievement & Growth
	White	Achievement	n/a
	Black or African American	Achievement & Growth	Achievement & Growth
	Economically Disadvantaged	Achievement & Growth	Achievement (Growth n/a)
	English Learners	Achievement & Growth	n/a
Asa Messer Elementary School	Students with Disabilities	Achievement & Growth	Achievement & Growth and Overall Low Perform
	Two or More Races	Achievement	Achievement (Growth n/a)
	Black or African American	Achievement	n/a
Carl G. Lauro Elementary School	Economically Disadvantaged	Achievement & Growth	n/a
	Students with Disabilities	Achievement	Achievement (Growth n/a)
	White	Achievement	n/a
Central High School	Black or African American	Achievement & Growth	Achievement & Growth
	Students with Disabilities	Achievement & Growth	Achievement & Growth
	Asian	Achievement & Growth	n/a
	Black or African American	Achievement & Growth	Achievement & Growth
	Economically Disadvantaged	Achievement & Growth	n/a
Charles N. Fortes Elementary School	English Learners	Achievement & Growth, Graduation	Graduation and Achievement & Growth
	Hispanic	Achievement & Growth	Overall Low Performance
	Students with Disabilities	Achievement & Growth, Graduation	Graduation and Achievement & Growth
	White	Achievement	Achievement (Growth n/a)
	Black or African American	Achievement	n/a
Dr. Jorge Alvarez High School	Economically Disadvantaged	Achievement	n/a
	English Learners	Achievement	n/a
	Students with Disabilities	Achievement	Achievement (Growth n/a)
	Black or African American	Graduation	Graduation
	Economically Disadvantaged	Achievement & Growth, Graduation	Graduation and Achievement & Growth
E-Cubed Academy	English Learners	Achievement & Growth, Graduation	Graduation and Achievement & Growth
	Hispanic	Achievement & Growth, Graduation	Graduation and Achievement & Growth
	Students with Disabilities	Achievement & Growth, Graduation	Graduation
	Black or African American	Achievement & Growth	Achievement & Growth
	English Learners	Achievement & Growth	n/a
Esek Hopkins Middle School	Students with Disabilities	Achievement, Graduation	Graduation and Achievement & Growth
	Students with Disabilities	Achievement & Growth	Overall Low Performance
	Economically Disadvantaged	Achievement & Growth	Achievement & Growth
Evolution's High School	English Learners	Achievement & Growth	Achievement & Growth
	Hispanic	Achievement & Growth	Achievement & Growth
	English Learners	Achievement & Growth	n/a
George J. West Elementary School	English Learners	Achievement & Growth	Achievement & Growth
	Students with Disabilities	Achievement & Growth	Achievement & Growth
	Two or More Races	Achievement	n/a
	White	Achievement & Growth	Achievement & Growth
	Black or African American	Achievement & Growth	Achievement & Growth
Gilbert Stuart Middle School	Economically Disadvantaged	Achievement & Growth	Achievement & Growth
	English Learners	Achievement & Growth	Achievement & Growth
	Hispanic	Achievement & Growth	Achievement & Growth
	Students with Disabilities	Achievement & Growth	Achievement & Growth
	White	Achievement & Growth	n/a
Governor Christopher DelSesto Middle School	Asian	Achievement & Growth	n/a
	Black or African American	Achievement & Growth	Overall Low Performance
	Economically Disadvantaged	Achievement & Growth	Achievement & Growth and Overall Low Perform
	English Learners	Achievement & Growth	Achievement & Growth and Overall Low Perform
	Hispanic	Achievement & Growth	Achievement & Growth and Overall Low Perform
Harry Kizirian Elementary School	Students with Disabilities	Achievement & Growth	Achievement & Growth and Overall Low Perform
	White	Achievement & Growth	Achievement & Growth and Overall Low Perform
	Black or African American	Achievement & Growth	Overall Low Performance
	Economically Disadvantaged	Achievement & Growth	n/a
	Hispanic	Achievement & Growth	Achievement & Growth
Hope High School	Asian	Graduation	Graduation
	Economically Disadvantaged	Achievement & Growth	Achievement & Growth
	English Learners	Achievement & Growth	Achievement & Growth
	Hispanic	Achievement & Growth, Graduation	Graduation and Achievement & Growth
	Students with Disabilities	Achievement & Growth, Graduation	Graduation and Achievement & Growth
Leviton Dual Language School	Two or More Races	Graduation	Graduation
	White	Achievement, Graduation	Graduation and Achievement & Growth
	Students with Disabilities	Achievement	Achievement (Growth n/a)
	English Learners	Achievement	Achievement & Growth
	Black or African American	Achievement & Growth	Achievement & Growth
Lillian Feinstein Elementary, Sack... Mount Pleasant High School	Economically Disadvantaged	Achievement & Growth	Achievement & Growth
	English Learners	Achievement & Growth, Graduation	Achievement & Growth
	Hispanic	Achievement & Growth, Graduation	Graduation and Achievement & Growth
	Students with Disabilities	Achievement & Growth, Graduation	Graduation and Achievement & Growth
	Two or More Races	Graduation	Graduation
Nathan Bishop Middle School	White	Graduation	Graduation
	Black or African American	Achievement & Growth	Overall Low Performance
	Economically Disadvantaged	Achievement & Growth	Achievement & Growth and Overall Low Perform
	English Learners	Achievement & Growth	Achievement & Growth and Overall Low Perform
	Hispanic	Achievement & Growth	Achievement & Growth and Overall Low Perform
Nathanael Greene Middle School	Students with Disabilities	Achievement & Growth	Achievement & Growth and Overall Low Perform
	Two or More Races	Achievement & Growth	Overall Low Performance
	Students with Disabilities	Achievement & Growth	n/a
	Two or More Races	Achievement	Achievement & Growth
	White	Achievement	Achievement (Growth n/a)
Providence Career and Technical Academy	Asian	Achievement & Growth	Achievement & Growth
	English Learners	Achievement & Growth	n/a
	Students with Disabilities	Achievement & Growth	Achievement & Growth
Reservoir Avenue School	White	n/a	Graduation
	Students with Disabilities	Achievement	Achievement (Growth n/a)
	Black or African American	Achievement & Growth	n/a
Robert L. Bailey IV, Elementary School	Students with Disabilities	Achievement & Growth	Achievement & Growth
	Two or More Races	Achievement	n/a
	English Learners	Achievement & Growth	Overall Low Performance
Roger Williams Middle School	Hispanic	Achievement & Growth	Overall Low Performance
	Students with Disabilities	Achievement & Growth	Achievement & Growth and Overall Low Perform
	Students with Disabilities	Achievement & Growth	Achievement & Growth
The Sgt. Cornel Young, Jr & Charlotte Woods Elementary Scho...	Two or More Races	Achievement	n/a
	White	Achievement	n/a
	Students with Disabilities	Achievement & Growth	n/a
Times2 Academy	Two or More Races	Achievement	Achievement (Growth n/a)
	Students with Disabilities	Achievement	Achievement & Growth
	Asian	Achievement & Growth	n/a
Vartan Gregorian Elementary Sch... West Broadway Middle School	Black or African American	Achievement & Growth	Achievement & Growth
	Economically Disadvantaged	Achievement & Growth	Achievement & Growth
	English Learners	Achievement & Growth	Achievement & Growth
	Hispanic	Achievement & Growth	Achievement & Growth
	Students with Disabilities	Achievement & Growth	Achievement & Growth
William B. Cooley, Sr. High School and the Providence Academy of International Studies High School	Two or More Races	Achievement & Growth	Achievement & Growth and Overall Low Perform
	White	Achievement & Growth	Achievement & Growth
	Black or African American	Graduation	Graduation
	Economically Disadvantaged	Achievement & Growth, Graduation	Graduation and Achievement & Growth
	English Learners	Achievement & Growth, Graduation	Graduation and Achievement & Growth
	Hispanic	Achievement & Growth, Graduation	Graduation and Achievement & Growth
	Students with Disabilities	Achievement & Growth, Graduation	Graduation

# Providence ELA Achievement by School

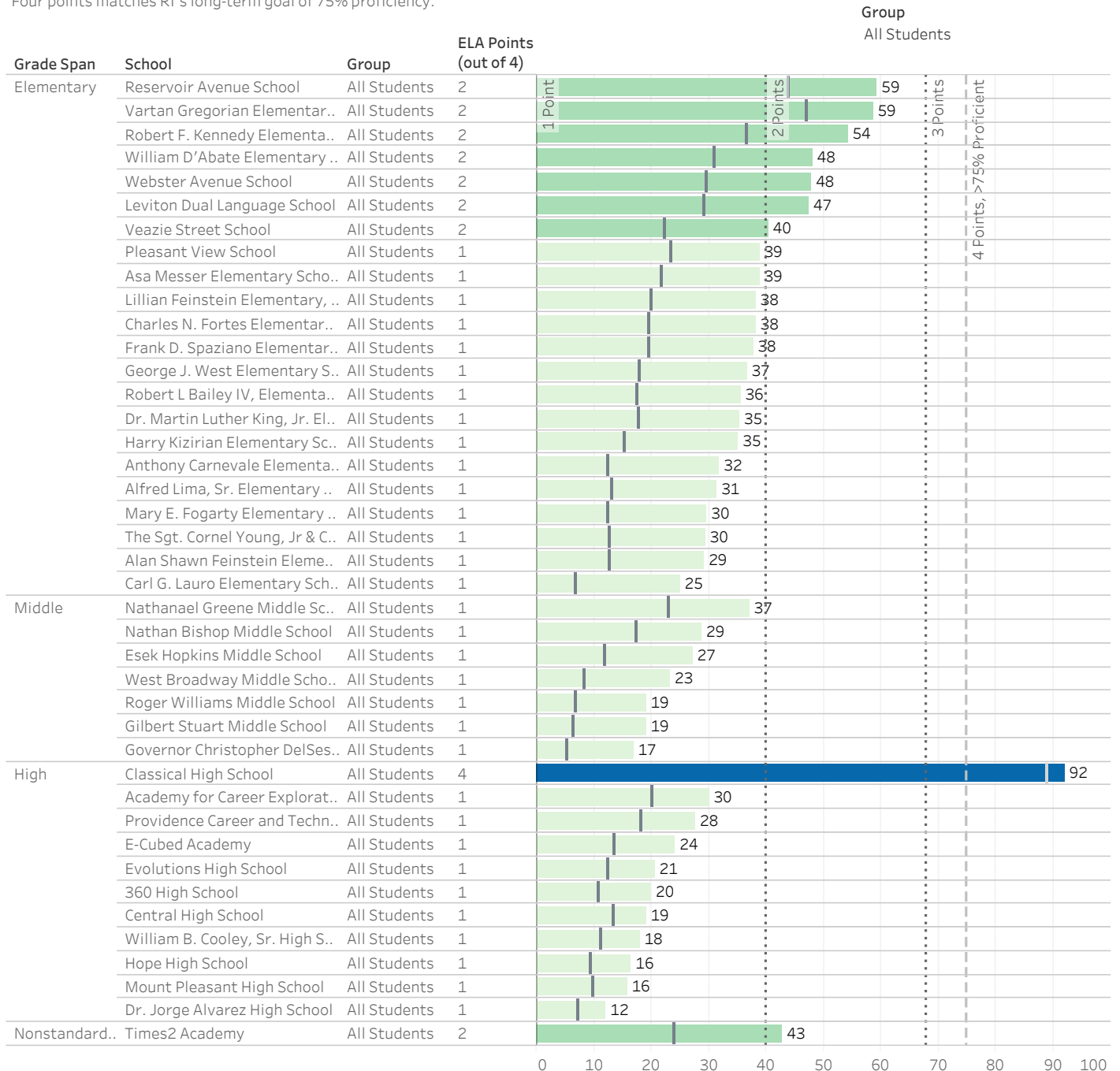
Measures performance on the RICAS, SAT, and DLM assessments in 2017-18 and 2018-19 combined

Achievement Points	Academic Proficiency Index
4 Points	>= 75% Proficient (no index)
3 Points	>= 68 (index)
2 Points	>= 40 AND < 68 (index)
1 Point	< 40 (index)

Green, blue, and grey filled bars below show proficiency index. Vertical lines within bars show percent proficient.

To get two or three points, the bar needs to reach the relevant dotted line. To get four points, the vertical line needs to cross the dashed '4 Points' line.

Four points matches RI's long-term goal of 75% proficiency.



Students who were not enrolled from Oct. 1 through the end of the testing window and students who moved to the US in the past year are not included.

\*Blank rows indicate too few students to report.

\*\*Subgroups with 10-19 students are reported, but not included in accountability determinations.

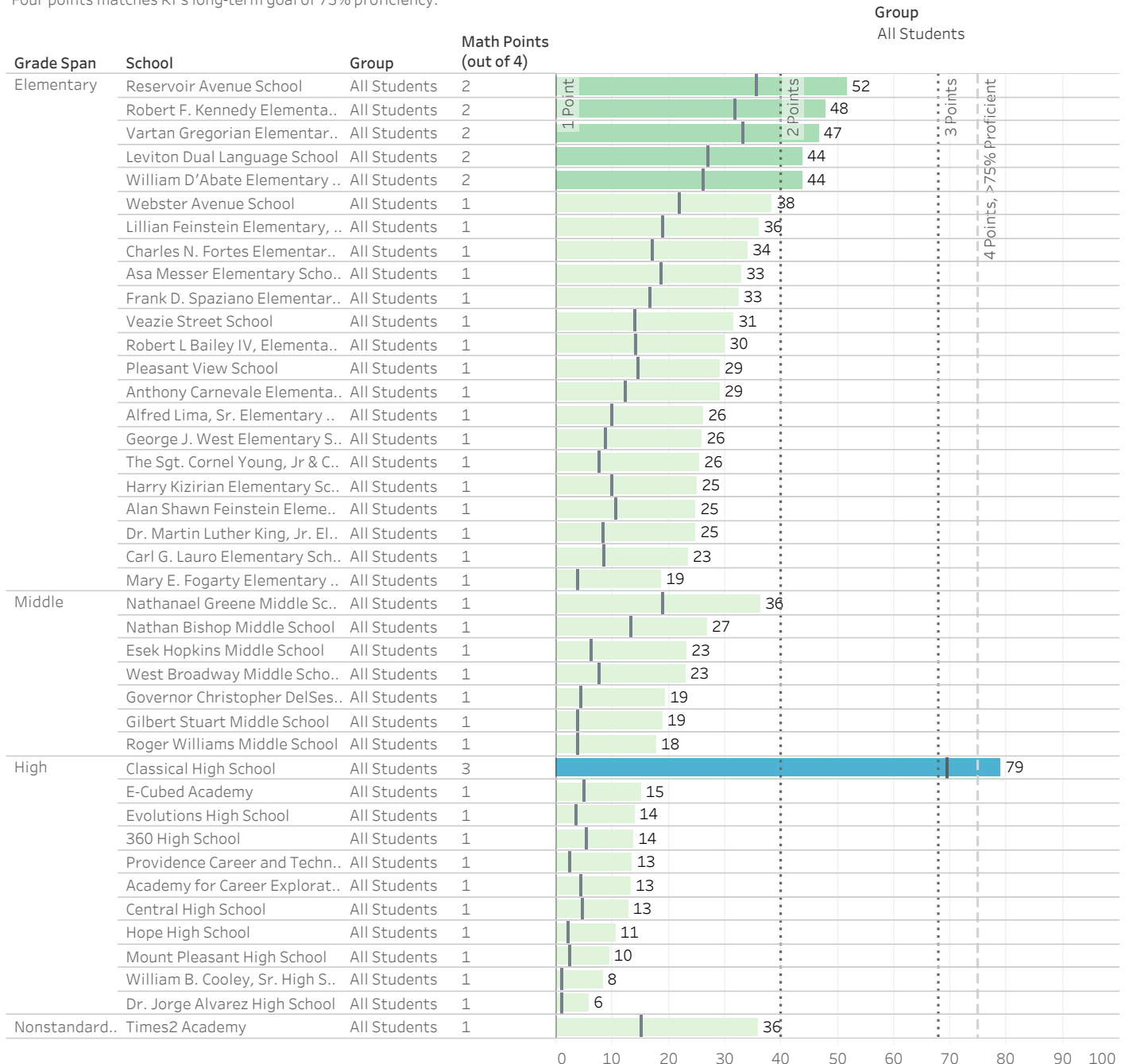
# Providence Math Achievement by School

Measures performance on the RICAS, SAT, and DLM assessments in 2017-18 and 2018-19 combined

Achievement Points	Academic Proficiency Index
4 Points	>= 75% Proficient (no index)
3 Points	>= 68 (index)
2 Points	>= 40 AND < 68 (index)
1 Point	< 40 (index)

Green, blue, and grey filled bars below show proficiency index. Vertical lines within bars show percent proficient.

To get two or three points, the bar needs to reach the relevant dotted line. To get four points, the vertical line needs to cross the dashed '4 Points' line. Four points matches RI's long-term goal of 75% proficiency.



Students who were not enrolled from Oct. 1 through the end of the testing window and students who moved to the US in the past year are not included.

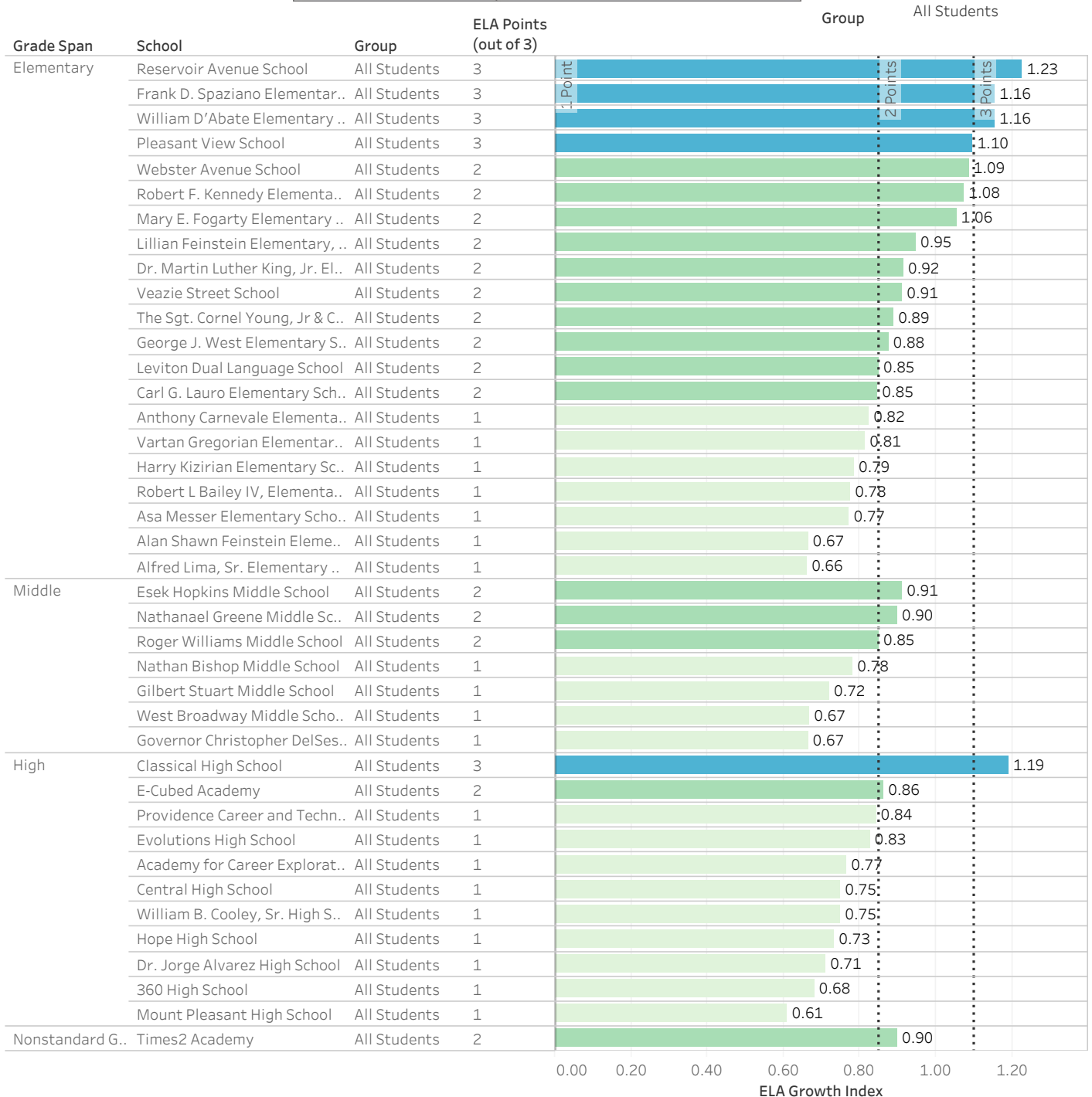
\*Blank rows indicate too few students to report.

\*\*Subgroups with 10-19 students are reported, but not included in accountability determinations.

## Providence ELA Growth by School

Progress on the ELA state assessment compared to similarly performing peers. Measure combines 2018 and 2019 data.

Growth Points	Growth Index
3 Points	$\geq 1.10$
2 Points	$\geq 0.85$ AND $< 1.10$
1 Point	$< 0.85$



Students who were not enrolled for most of the school year and students who moved to the US in the past year are not included.

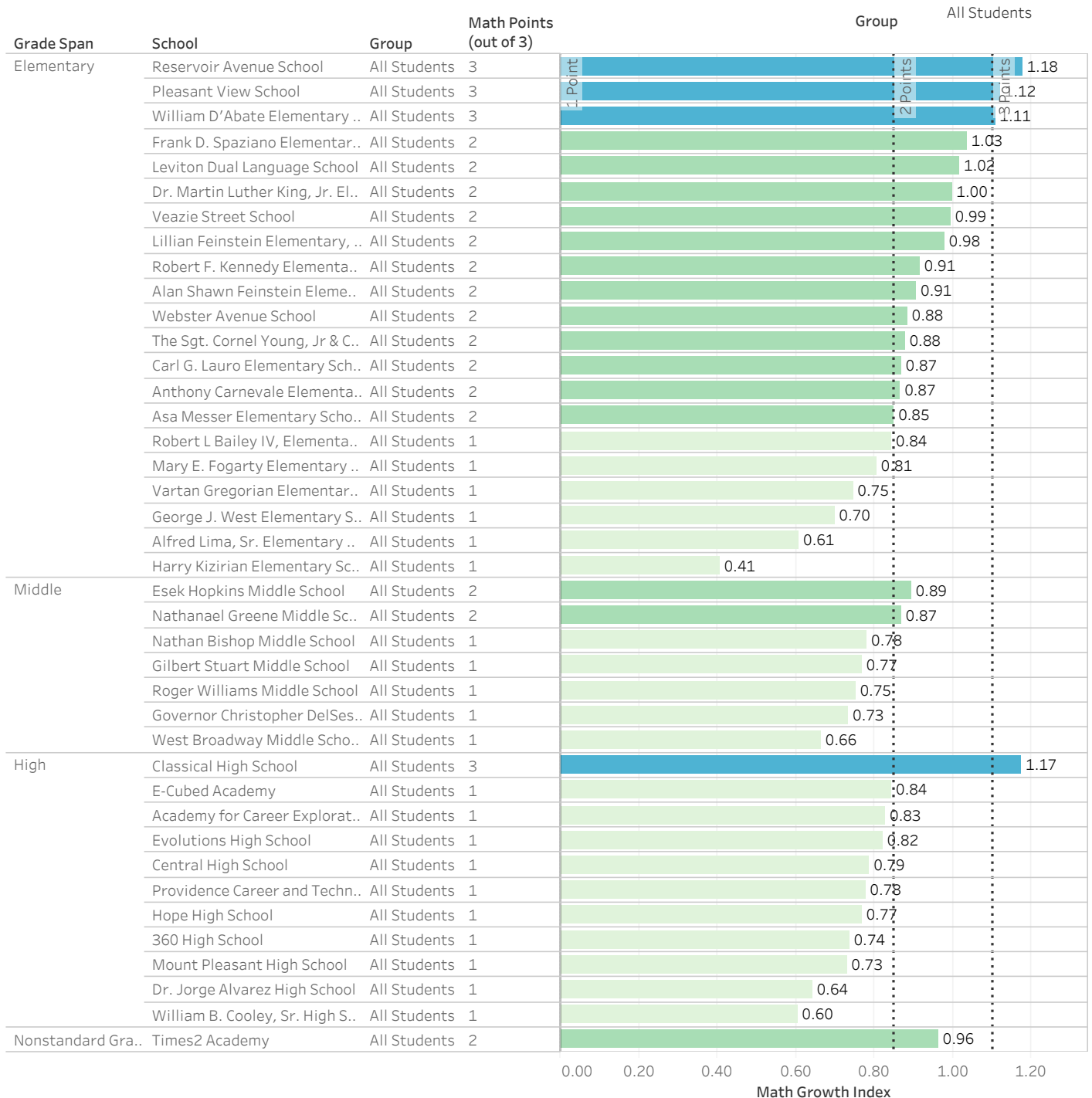
\*Blank rows indicate too few students to report.

\*\*Subgroups with 10-19 students are reported, but not included in accountability determinations.

## Providence Math Growth by School

Progress on the math state assessment compared to similarly performing peers. Measure combines 2018 and 2019 data.

Growth Points	Growth Index
3 Points	$\geq 1.10$
2 Points	$\geq 0.85$ AND $< 1.10$
1 Point	$< 0.85$



Students who were not enrolled for most of the school year and students who moved to the US in the past year are not included.

\*Blank rows indicate too few students to report.

\*\*Subgroups with 10-19 students are reported, but not included in accountability determinations.

# Providence English Language Proficiency by School

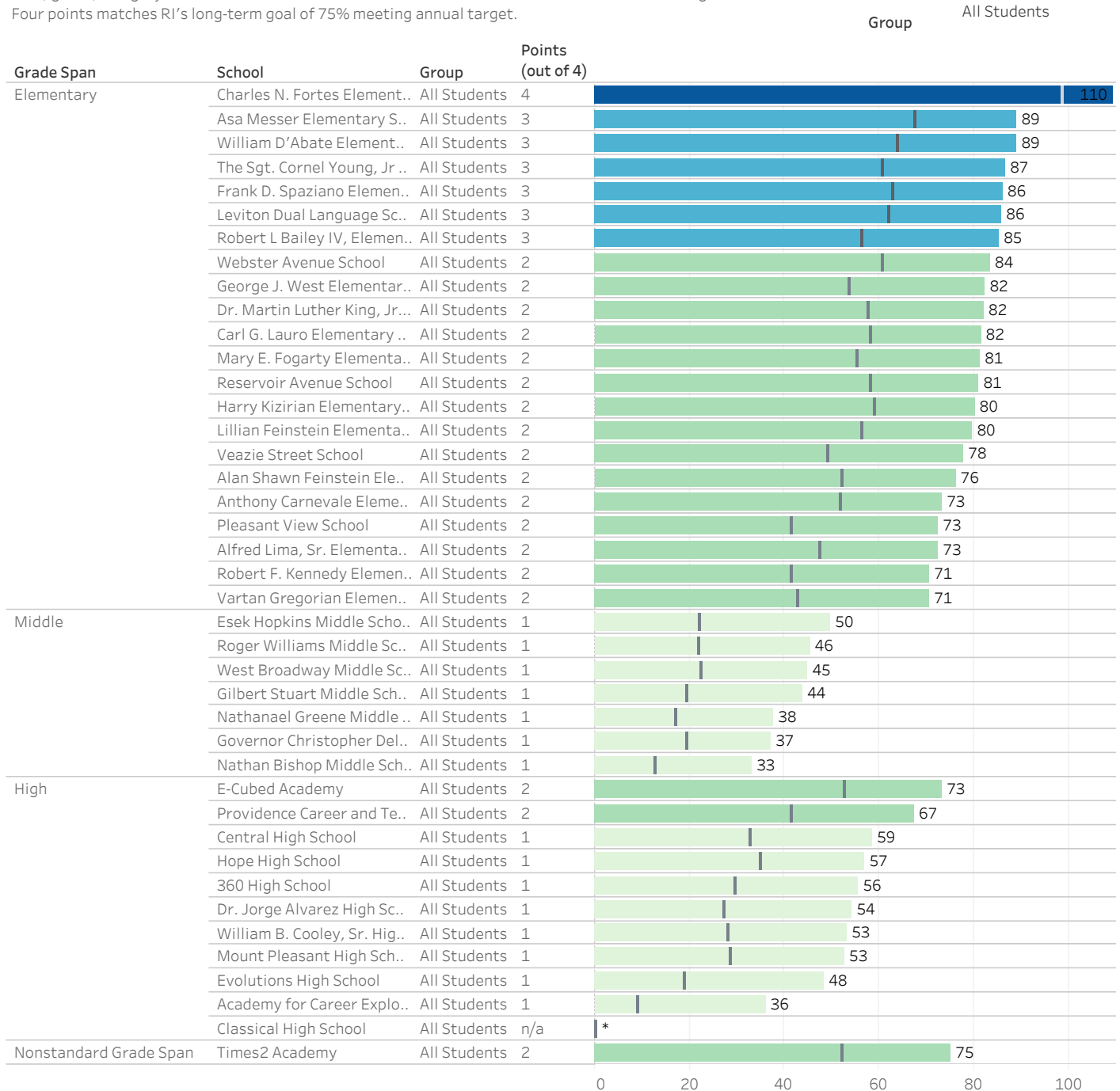
Progress toward English language proficiency on the ACCESS assessment in 2017-18 and 2018-19

English Language Proficiency Cuts				
ELP Points	Elementary	Middle/High	K-8 School	K-12 School
4 Points	>= 75% Met Target (no index)			
3 Points	>= 85 (index)	>= 80 (index)	>= 83 (index)	>= 82 (index)
2 Points	>= 65 AND < 85 (index)	>= 60 AND < 80 (index)	>= 63 AND < 83 (index)	>= 62 AND < 82 (index)
1 Point	< 65 (index)	< 60 (index)	< 63 (index)	< 62 (index)

The ELP index represents the portion of progress students made compared to individual targets.

Blue, green, and grey filled bars below show ELP index. Vertical lines within bars show % met target.

Four points matches RI's long-term goal of 75% meeting annual target.



\*Blank rows indicate too few students to report.

\*\*Subgroups with 10-19 students are reported, but not included in accountability determinations.



## Providence Graduation Rate by School

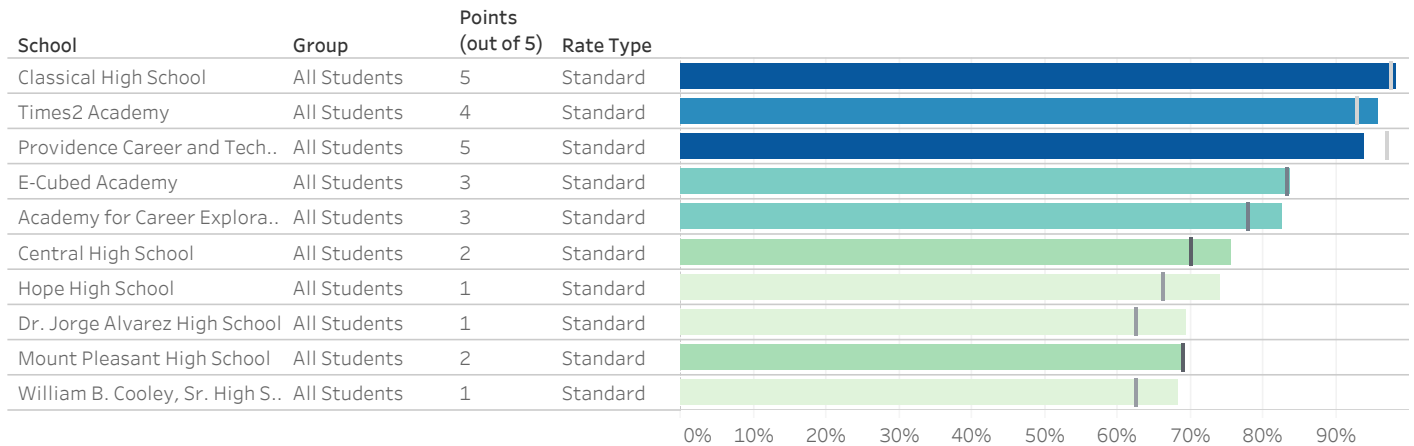
Graduation data are on a one-year lag; these are from 2018 reporting.

Regular Cuts	Standard	New School - 2 Cohorts	New School - 1 Cohort	5-Year Program
5 Points	≥ 95% 4-Year Grad Rate			≥ 96% 5-Year Grad Rate
4 Points	≥ 90% Composite Rate	≥ 89% Composite Rate	≥ 86% 4-Year Grad Rate	≥ 92% Composite Rate
3 Points	≥ 80% AND < 90% Composite Rate	≥ 78% AND < 89% Composite Rate	≥ 72% 4-Year Grad Rate	≥ 84% AND < 92% Composite Rate
2 Points	< 80% Composite Rate	< 78% Composite Rate	< 72% 4-Year Grad Rate	< 84% Composite Rate
1 Point	≤ 2/3 4-Year Grad Rate			< 72% 5-Year Grad Rate

Filled blue, green, and grey bars below show Composite Rate. Vertical lines within bars show Base Rate.

Five points matches RI's long-term goal of 95% graduating within 4 years.

Group  
All Students



Graduation data are based on 2017-18 and earlier. Schools and subgroups with fewer than 20 students have up to two additional years of data added.

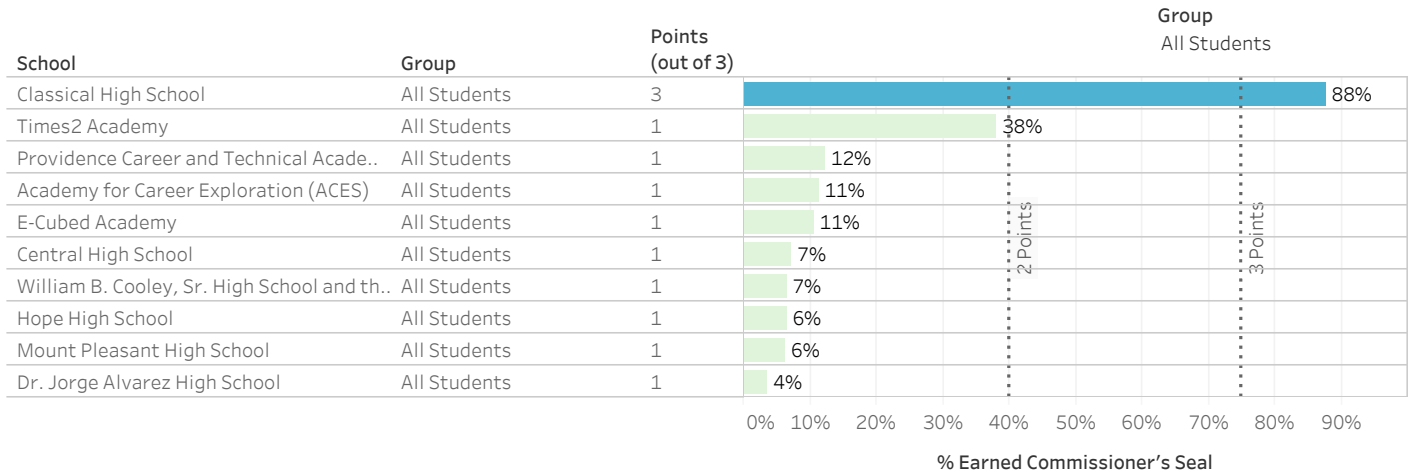
\*Blank rows indicate too few students to report.

\*\*Subgroups with 10-19 students are reported, but not included in accountability determinations.

## Providence Commissioner's Seal by School

Percentage of 2018 graduates demonstrating high school proficiency in ELA and mathematics

Commissioner's Seal Points	% Earned Commissioner's Seal
3 Points	$\geq 75\%$
2 Points	$< 75\% \text{ AND } \geq 40\%$
1 Point	$\leq 40\%$



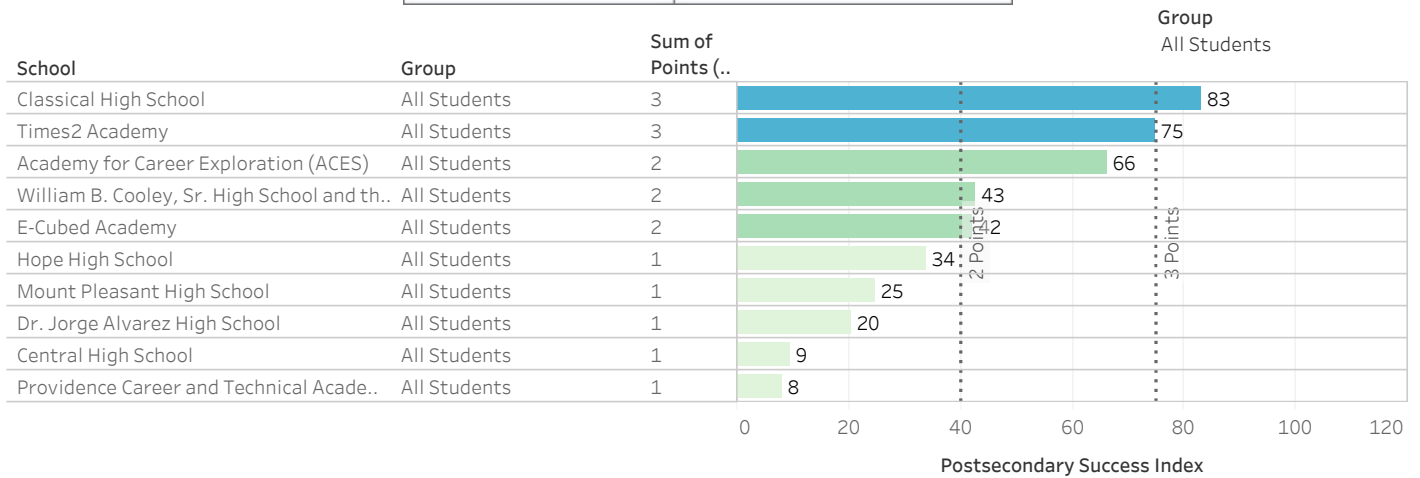
\*Blank rows indicate too few students to report.

\*\*Subgroups with 10-19 students over 3 years are reported, but not included in accountability determinations.

## Providence Postsecondary Success by School

Index for 2018 graduates who earned credentials beyond a high school diploma

Postsecondary Success Points	Postsecondary Success Index
3 Points	$\geq 75$
2 Points	$< 75$ AND $\geq 40$
1 Point	$\leq 40$



The Postsecondary Success Index awards 1 point for each student with 1 AP credit, college course, or industry-approved CTE credential, 1.1 points for 2 credentials, and 1.2 points for 3 or more credentials. These points are summed and then divided by the total number of 2018 graduates.

\*Blank rows indicate too few students to report.

\*\*Subgroups with 10-19 students over 3 years are reported, but not included in accountability determinations.

# School Quality and Student Success: Student Chronic Absenteeism

Student Chronic Absenteeism is defined as missing 10% of days or more. That's 18 days or more over a full school year.

Student Absenteeism Cuts, using percent				
Student Absenteeism Points	Elementary/Middle	High School	K-12 School	7-12 School
3	< 5.0	< 10.0	< 6.6	< 8.3
2	>= 5.0 AND < 15.0	>= 10.0 AND < 20.0	>= 6.6 AND < 16.6	>= 8.3 AND < 18.3
1	>= 15.0	>= 20.0	>= 16.6	>= 18.3

## Providence Student Chronic Absenteeism by School



Includes grades K-12. Schools and subgroups with fewer than 20 students have up to two additional years of data added.

\*Blank rows indicate too few students to report.

\*\*Subgroups with 10-19 students over 3 years are reported, but not included in accountability determinations.

## School Quality and Student Success: Teacher Chronic Absenteeism

Teacher Chronic Absenteeism is defined as missing 10% of days or more. That's 18 days or more over a full school year.

Teacher Absenteeism Points	% Chronically Absent
3 Points	< 5.0
2 Points	>= 5.0 AND < 10.0
1 Point	>= 10.0

## Providence Teacher Chronic Absenteeism by School

Group

All Students

Grade Span	School Name	Group	Points (out of 3)																																																																																																																																																																																																																																																																																																																																																																																																																																																																																																																																																																																																																																																																																																																																																																																																																																																																																																																																																																																																																																																																																																																																																																																																																																																																																																																																																																																																																																																																																																																				
------------	-------------	-------	-------------------	--	--	--	--	--	--	--	--	--	--	--	--	--	--	--	--	--	--	--	--	--	--	--	--	--	--	--	--	--	--	--	--	--	--	--	--	--	--	--	--	--	--	--	--	--	--	--	--	--	--	--	--	--	--	--	--	--	--	--	--	--	--	--	--	--	--	--	--	--	--	--	--	--	--	--	--	--	--	--	--	--	--	--	--	--	--	--	--	--	--	--	--	--	--	--	--	--	--	--	--	--	--	--	--	--	--	--	--	--	--	--	--	--	--	--	--	--	--	--	--	--	--	--	--	--	--	--	--	--	--	--	--	--	--	--	--	--	--	--	--	--	--	--	--	--	--	--	--	--	--	--	--	--	--	--	--	--	--	--	--	--	--	--	--	--	--	--	--	--	--	--	--	--	--	--	--	--	--	--	--	--	--	--	--	--	--	--	--	--	--	--	--	--	--	--	--	--	--	--	--	--	--	--	--	--	--	--	--	--	--	--	--	--	--	--	--	--	--	--	--	--	--	--	--	--	--	--	--	--	--	--	--	--	--	--	--	--	--	--	--	--	--	--	--	--	--	--	--	--	--	--	--	--	--	--	--	--	--	--	--	--	--	--	--	--	--	--	--	--	--	--	--	--	--	--	--	--	--	--	--	--	--	--	--	--	--	--	--	--	--	--	--	--	--	--	--	--	--	--	--	--	--	--	--	--	--	--	--	--	--	--	--	--	--	--	--	--	--	--	--	--	--	--	--	--	--	--	--	--	--	--	--	--	--	--	--	--	--	--	--	--	--	--	--	--	--	--	--	--	--	--	--	--	--	--	--	--	--	--	--	--	--	--	--	--	--	--	--	--	--	--	--	--	--	--	--	--	--	--	--	--	--	--	--	--	--	--	--	--	--	--	--	--	--	--	--	--	--	--	--	--	--	--	--	--	--	--	--	--	--	--	--	--	--	--	--	--	--	--	--	--	--	--	--	--	--	--	--	--	--	--	--	--	--	--	--	--	--	--	--	--	--	--	--	--	--	--	--	--	--	--	--	--	--	--	--	--	--	--	--	--	--	--	--	--	--	--	--	--	--	--	--	--	--	--	--	--	--	--	--	--	--	--	--	--	--	--	--	--	--	--	--	--	--	--	--	--	--	--	--	--	--	--	--	--	--	--	--	--	--	--	--	--	--	--	--	--	--	--	--	--	--	--	--	--	--	--	--	--	--	--	--	--	--	--	--	--	--	--	--	--	--	--	--	--	--	--	--	--	--	--	--	--	--	--	--	--	--	--	--	--	--	--	--	--	--	--	--	--	--	--	--	--	--	--	--	--	--	--	--	--	--	--	--	--	--	--	--	--	--	--	--	--	--	--	--	--	--	--	--	--	--	--	--	--	--	--	--	--	--	--	--	--	--	--	--	--	--	--	--	--	--	--	--	--	--	--	--	--	--	--	--	--	--	--	--	--	--	--	--	--	--	--	--	--	--	--	--	--	--	--	--	--	--	--	--	--	--	--	--	--	--	--	--	--	--	--	--	--	--	--	--	--	--	--	--	--	--	--	--	--	--	--	--	--	--	--	--	--	--	--	--	--	--	--	--	--	--	--	--	--	--	--	--	--	--	--	--	--	--	--	--	--	--	--	--	--	--	--	--	--	--	--	--	--	--	--	--	--	--	--	--	--	--	--	--	--	--	--	--	--	--	--	--	--	--	--	--	--	--	--	--	--	--	--	--	--	--	--	--	--	--	--	--	--	--	--	--	--	--	--	--	--	--	--	--	--	--	--	--	--	--	--	--	--	--	--	--	--	--	--	--	--	--	--	--	--	--	--	--	--	--	--	--	--	--	--	--	--	--	--	--	--	--	--	--	--	--	--	--	--	--	--	--	--	--	--	--	--	--	--	--	--	--	--	--	--	--	--	--	--	--	--	--	--	--	--	--	--	--	--	--	--	--	--	--	--	--	--	--	--	--	--	--	--	--	--	--	--	--	--	--	--	--	--	--	--	--	--	--	--	--	--	--	--	--	--	--	--	--	--	--	--	--	--	--	--	--	--	--	--	--	--	--	--	--	--	--	--	--	--	--	--	--	--	--	--	--	--	--	--	--	--	--	--	--	--	--	--	--	--	--	--	--	--	--	--	--	--	--	--	--	--	--	--	--	--	--	--	--	--	--	--	--	--	--	--	--	--	--	--	--	--	--	--	--	--	--	--	--	--	--	--	--	--	--	--	--	--	--	--	--	--	--	--	--	--	--	--	--	--	--	--	--	--	--	--	--	--	--	--	--	--	--	--	--	--	--	--	--	--	--	--	--	--	--	--	--	--	--	--	--	--	--	--	--	--	--	--	--	--	--	--	--	--	--	--	--	--	--	--	--	--	--	--	--	--	--	--	--	--	--	--	--	--	--	--	--	--	--	--	--	--	--	--	--	--	--	--	--	--	--	--	--	--	--	--	--	--	--	--	--	--	--	--	--	--	--	--	--	--	--	--	--	--	--	--	--	--	--	--	--	--	--	--	--	--	--	--	--	--	--	--	--	--	--	--	--	--	--	--	--	--	--	--	--	--	--	--	--	--	--	--	--	--	--	--	--	--	--	--	--	--	--	--	--	--	--	--	--	--	--	--	--	--	--	--	--	--	--	--	--	--	--	--	--	--	--	--	--	--	--	--	--	--	--	--	--	--	--	--	--	--	--	--	--	--	--	--	--	--	--	--	--	--	--	--	--	--	--	--	--	--	--	--	--	--	--	--	--	--	--	--	--	--	--	--	--	--	--	--	--	--	--	--	--	--	--	--	--	--	--	--	--	--	--	--	--	--	--	--	--	--	--	--	--	--	--	--	--	--	--	--	--	--	--	--	--	--	--	--	--	--	--	--	--	--	--	--	--	--	--	--	--	--	--	--	--	--	--	--	--	--	--	--	--	--	--	--	--	--	--	--	--	--	--	--	--	--	--	--	--	--	--	--	--	--	--	--	--	--	--	--	--	--	--	--	--	--	--	--	--	--	--	--	--	--	--	--	--	--	--	--	--	--	--	--	--	--	--	--	--	--	--	--	--	--	--	--	--	--	--	--	--	--	--	--	--	--	--	--	--	--	--	--	--	--	--	--	--	--	--	--	--	--	--	--	--	--	--	--	--	--	--	--	--	--	--	--	--	--	--	--	--	--	--	--	--	--	--	--	--	--	--	--	--	--	--	--	--	--	--	--	--	--	--	--	--	--	--	--	--	--	--	--	--	--	--	--	--	--	--	--	--	--	--	--	--	--	--	--	--	--	--	--	--	--	--	--	--	--	--	--	--	--	--	--	--	--	--

Long-term pre-approved absences and absences for professional development are not counted. Teacher counts are weighted by length of assignment and full time status. For subgroups, teacher counts are also weighted by percent of time spent with that subgroup.

\*Blank rows indicate too few teachers or students to report.

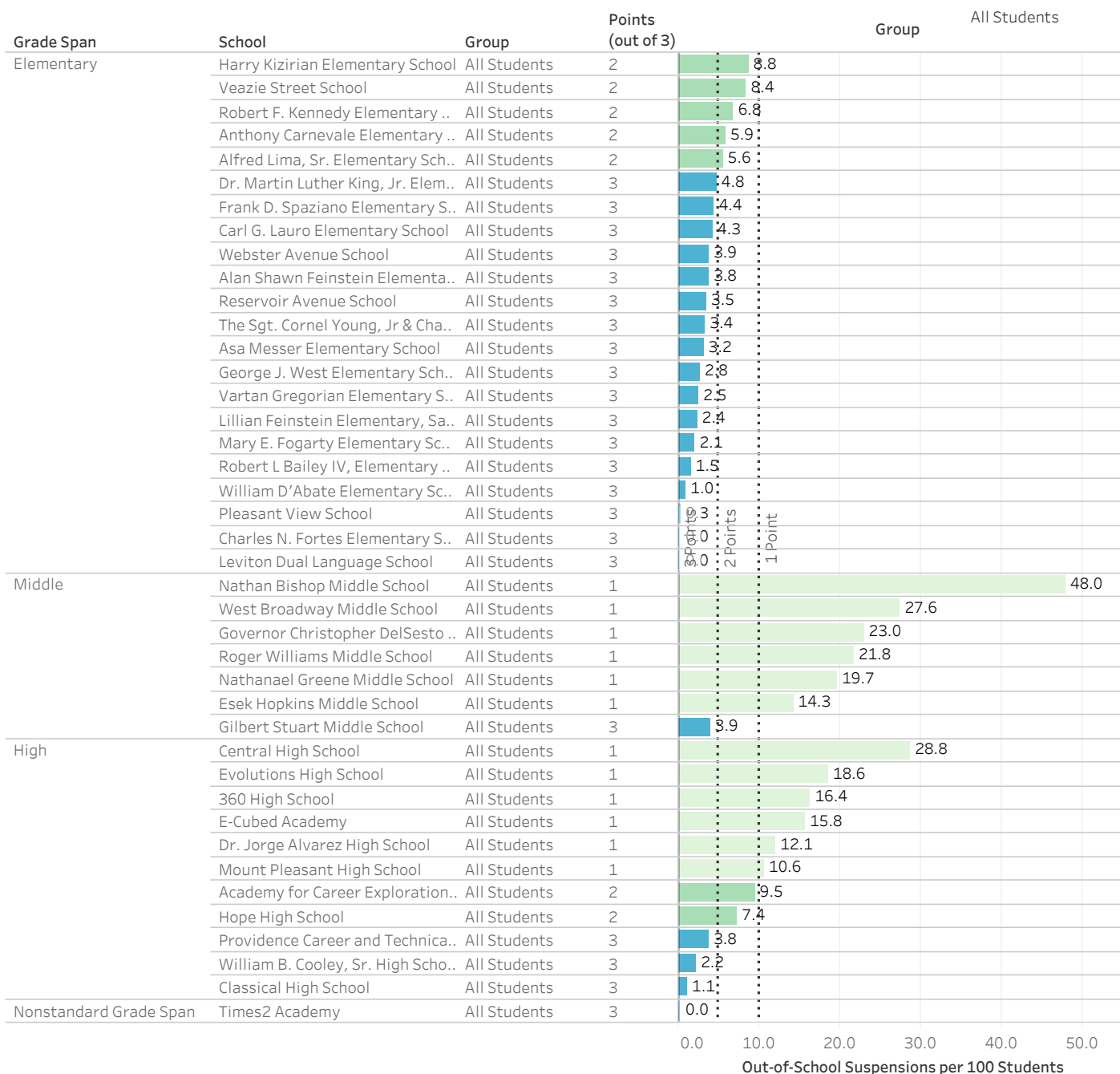
\*\*Schools and subgroups with 10-19 teachers or students are reported, but not included in accountability determinations.

# School Quality and Student Success: Suspension

The annual number of out-of-school suspensions per 100 students.

Suspension Points	Out-of-School Suspensions per 100 Students
3 Points	< 5.0
2 Points	>= 5.0 AND < 10.0
1 Point	>= 10.0

## Providence Out-of-School Suspensions by School



Schools and subgroups with fewer than 20 students have up to two additional years of data added.

\*Blank rows indicate too few students to report.

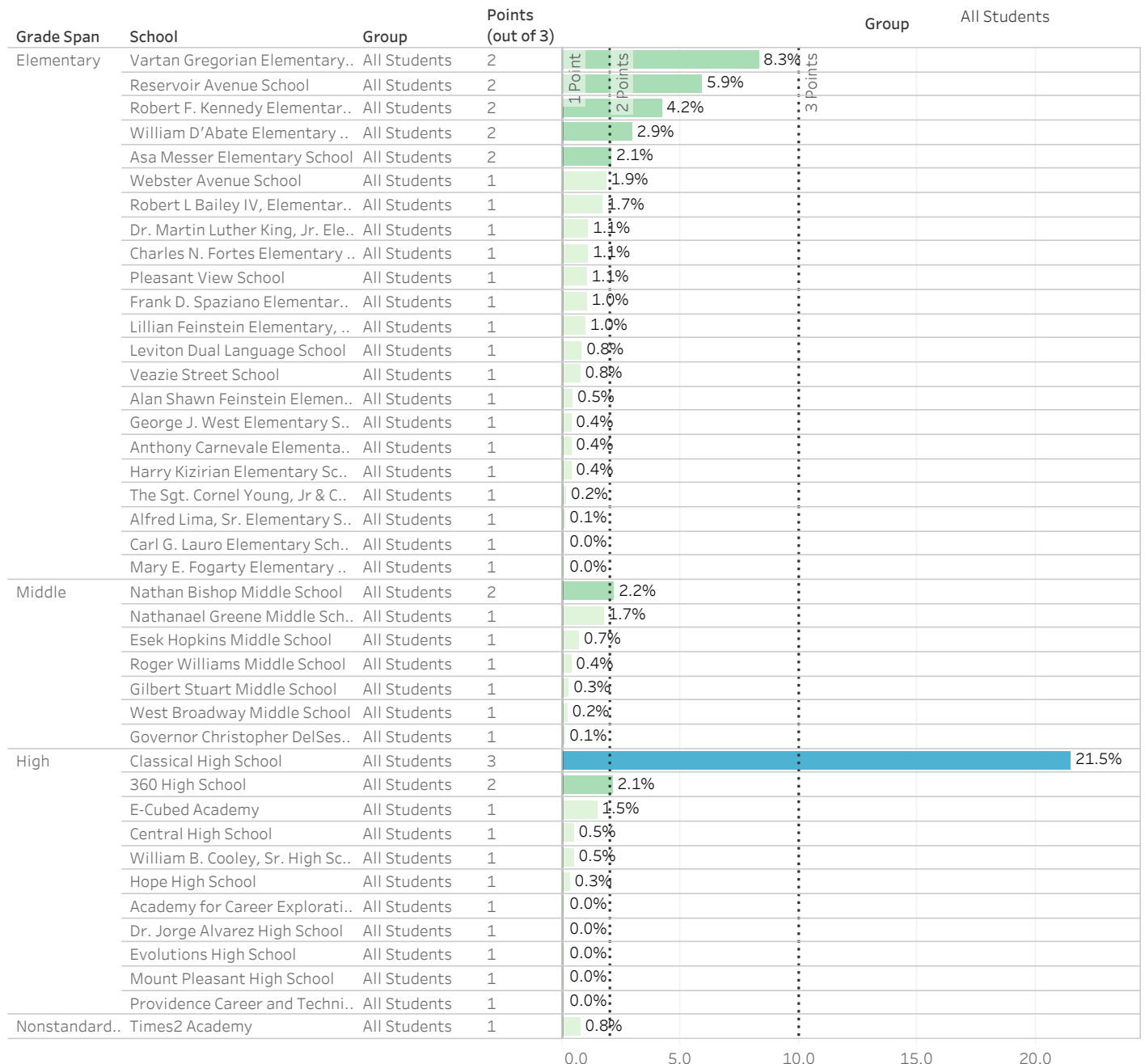
\*\*Schools and subgroups with 10-19 students are reported, but not included in accountability determinations.

## School Quality and Student Success: Exceeds Expectations - ELA

The percent of students who score at the top level (Level 4) on the state assessment

Exceeds Points	% Exceeds Expectations
3 Points	$\geq 10.0$
2 Points	$\geq 2.0$ AND $< 10.0$
1 Point	$< 2.0$

Providence Percent Exceeds Expectations in ELA by School



Students who were not enrolled from Oct. 1 through the end of the testing window and students who moved to the US in the past year are not included.

\*Blank rows indicate too few students to report.

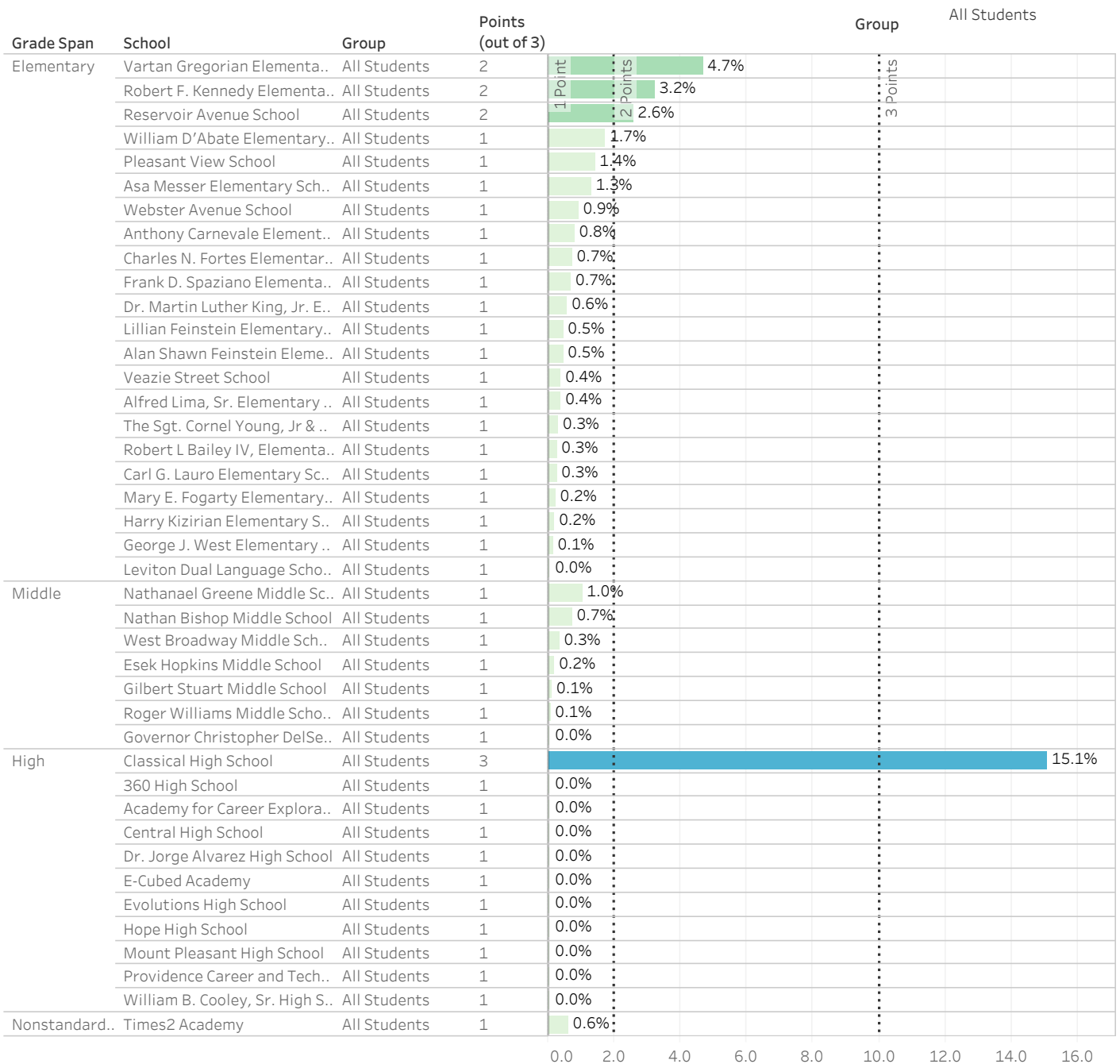
\*\*Subgroups with 10-19 students are reported, but not included in accountability determinations.

## School Quality and Student Success: Exceeds Expectations - Math

The percent of students who score at the top level (Level 4) on the state assessment

Exceeds Points	% Exceeds Expectations
3 Points	$\geq 10.0$
2 Points	$\geq 2.0$ AND $< 10.0$
1 Point	$< 2.0$

### Providence Percent Exceeds Expectations in Math by School



Students who were not enrolled from Oct. 1 through the end of the testing window and students who moved to the US in the past year are not included.

\*Blank rows indicate too few students to report.

\*\*Subgroups with 10-19 students are reported, but not included in accountability determinations.



## 2018-19 State Assessment Data for Providence

The state assessments include RICAS (grades 3-8), SAT (grade 11), NGSA (grades 5, 8, 11) and DLM Alternate Assessments (grades 3-8, 11).

### Performance Level Legend



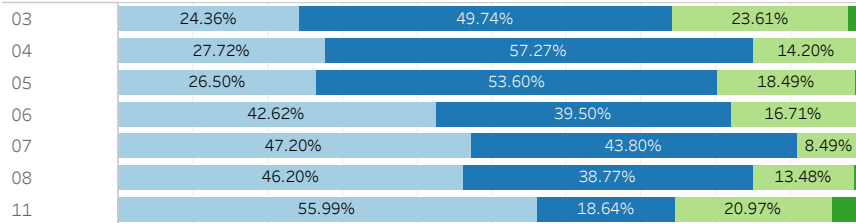
### Participation Legend



View Performance and Participation By: Grade

### ELA Performance in State Assessments

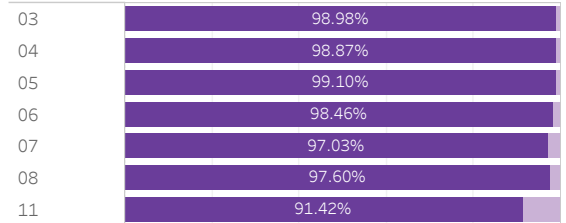
Subgroup: Grade



empty cells indicate less than 10 students

### ELA Participation in State Assessments

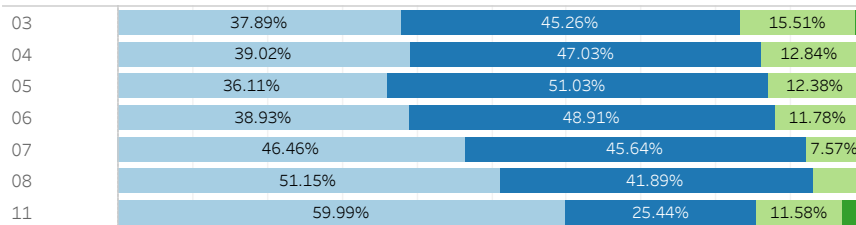
Subgroup: Grade



empty cells indicate less than 10 students

### Math Performance in State Assessments

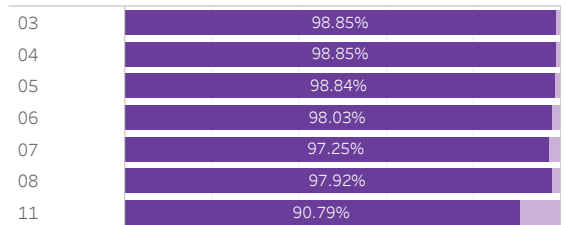
Subgroup: Grade



empty cells indicate less than 10 students

### Math Participation in State Assessments

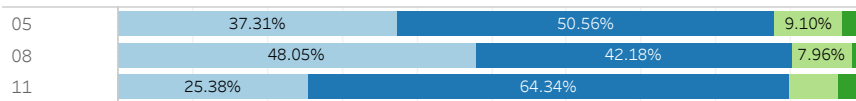
Subgroup: Grade



empty cells indicate less than 10 students

### Science Performance in State Assessments

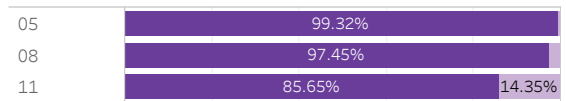
Subgroup: Grade



empty cells indicate less than 10 students

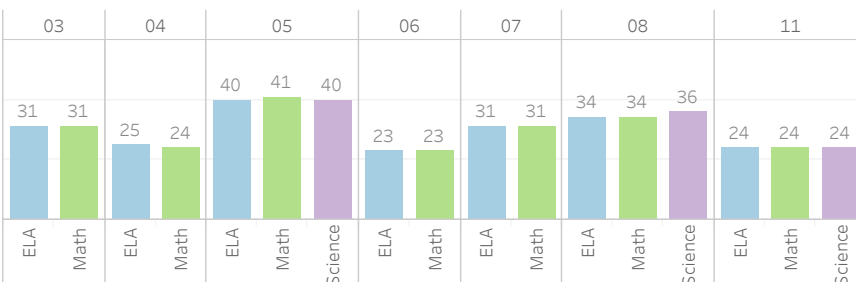
### Science Participation in State Assessments

Subgroup: Grade



empty cells indicate less than 10 students

### Students Assessed with a DLM Alternate Assessment By Grade and Subject



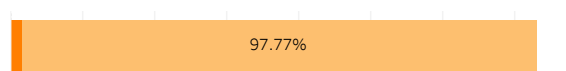
empty cells indicate less than 10 students

Number of recently arrived English language learners exempted from the reading/language arts assessments

373

blank value indicates less than 10 students

### English language proficiency of English language learners



empty cells indicate less than 10 students

Data Source: Rhode Island State Assessments include RICAS, DLM Alternate Assessment, NGSA and SAT. English language proficiency of English language learners is assessed with ACCESS or Alternate ACCESS

## Civil Rights Data Collection (CRDC) for 2015-16

### Providence District Enrollment Indicators

(n/a means indicator is not applicable to district)

	Student count	Percent of District enrollment
Preschool enrollment	298	1.2%
Student enrollment in at least one Advance Placement course	1,253	5.1%

### Providence District Suspension Indicators

	Student count
Students who were chronically absent	8,387
Students who received one or more in-school suspensions	721
Students who received only one out-of-school suspension	1,203
Students who received more than one out-of-school suspension	1,009
Students who received an expulsion with educational services	0
Students who received an expulsion without educational services	0
Students who received an expulsion under zero tolerance policies	0
Students who were referred to a law enforcement agency or official	769
Students who received a school-related arrest	140
Students reported as harassed or bullied on the basis of disability	8
Students reported as harassed or bullied on the basis of race,color or national origin	14
Students reported as harassed or bullied on the basis of sex	34

### Select CRDC Indicator for Demographic Data

Preschool enrollment

### Providence:Preschool enrollment demographics

(n/a means indicator is not applicable to district)

		Female	Male
All students	Student count	107	191
	American Indian/Alaska Native	4	4
	Asian	9	8
	Black	22	37
	Hispanic	55	103
	Native Hawaiian/Pacific Islander	0	0
	Two or More Races	4	14
	White	13	25
	Children with Disabilities	15	83
	English Language Learners	16	27

The Civil Rights Data Collection (CRDC) is a publically available federal data collection obtained directly from local education agencies (<https://ocrdata.ed.gov/>). Data may differ slightly from state-provided reports.

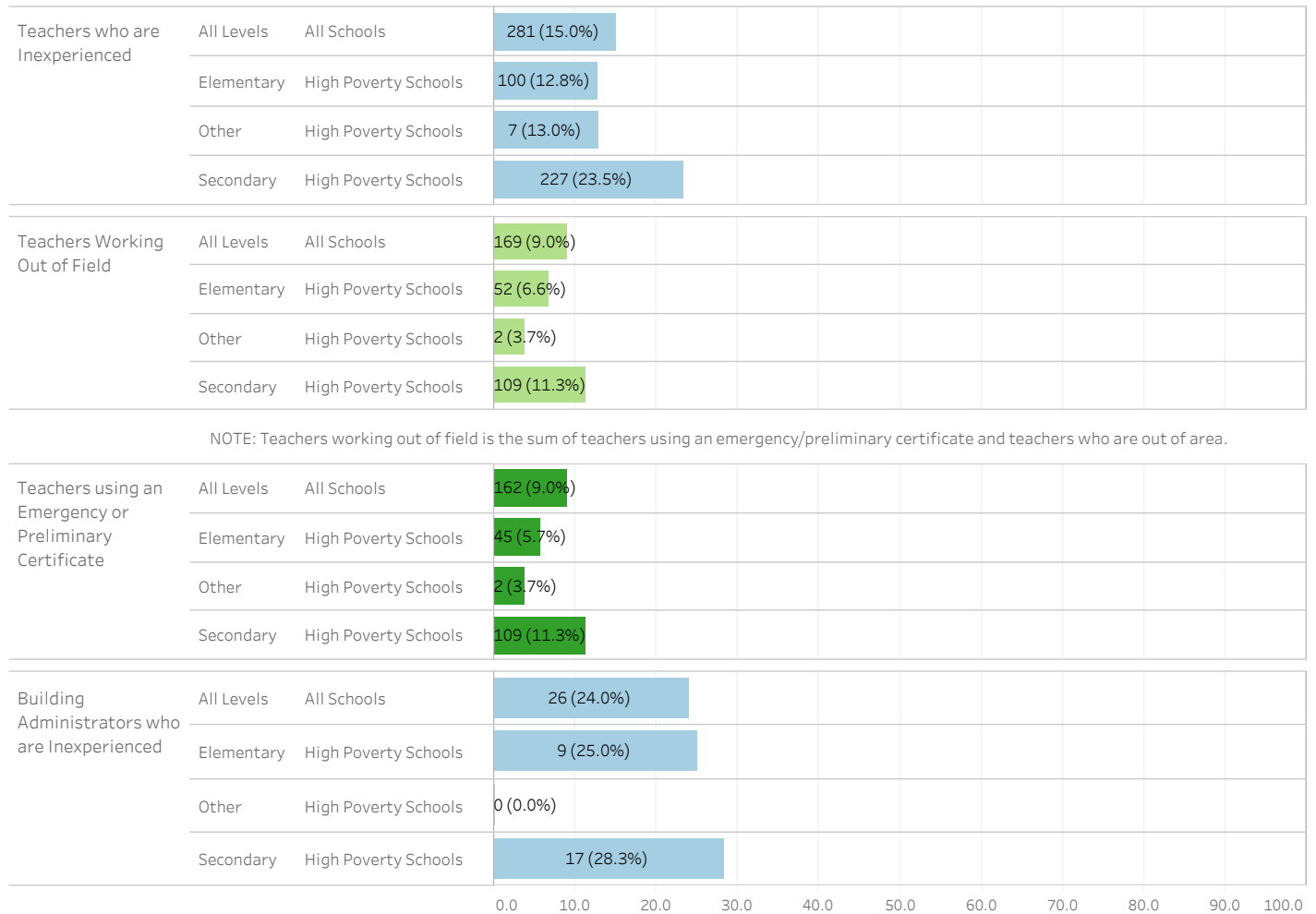
## 2018-19 Educator Qualifications for Providence

Total Number of Teachers in This District

1,828

Total Number of Building Administrators in This District

107



Data: A teacher or building administrator may be counted in more than one category

Data Source: 2018-19 Educator Quality: Rhode Island Department of Education, Office of Educator Excellence & Certification Services. This dataset includes personnel assignment data as reported through the personnel data collection.

2017-18 Per Pupil Expenditures

Per Pupil Expenditures for Providence

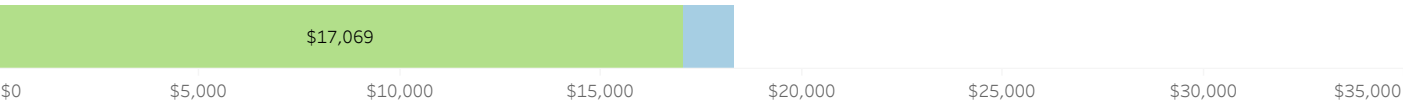


Per Pupil Expenditures for The State



**Expenditures**  
School Based Support  
Total Per Pupil

Per Pupil Expenditures for Providence



Per Pupil Expenditures for the State



**Fund Category**  
Federal  
State/Local

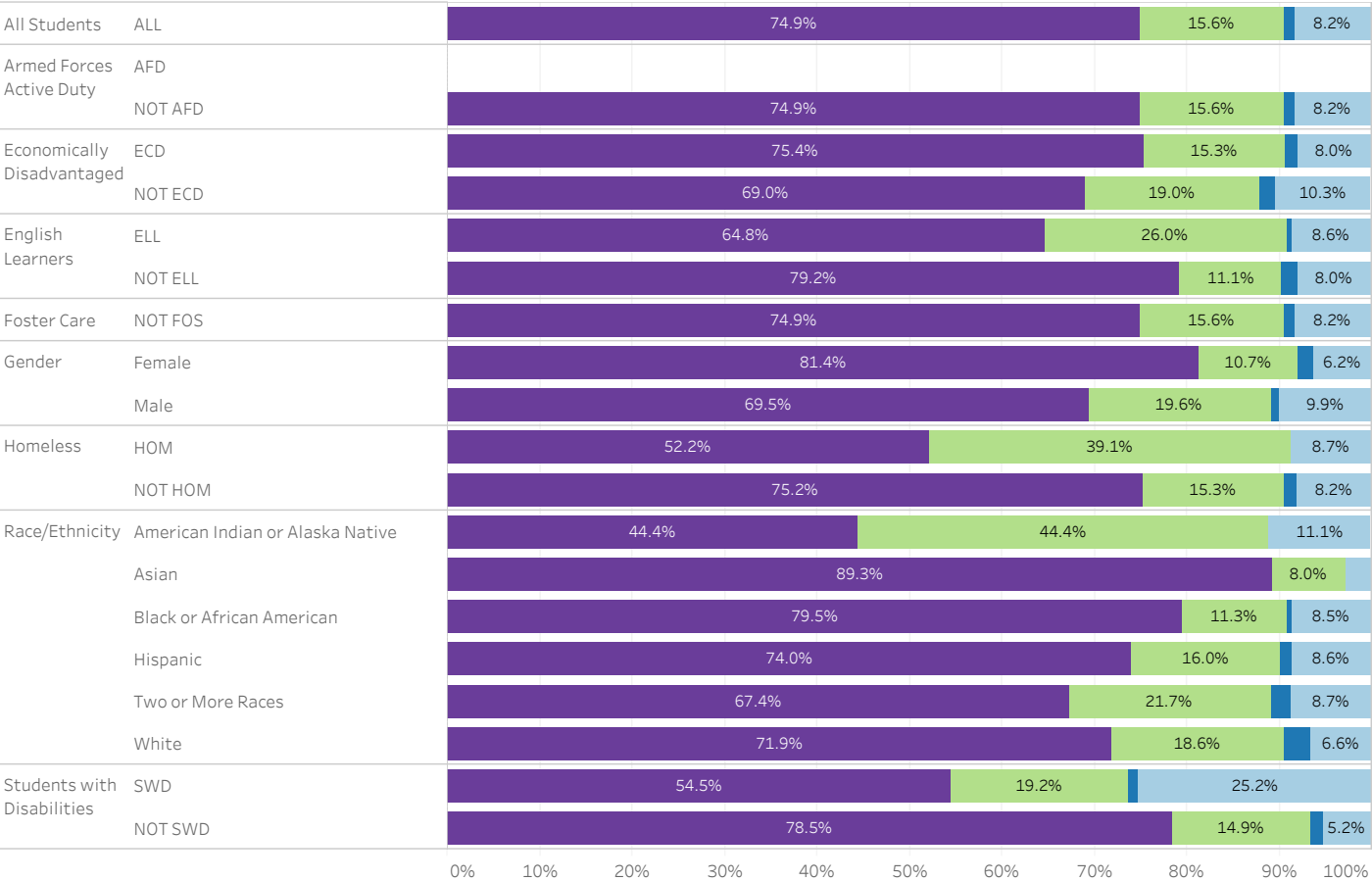
Providence 4 Year Rates for the 2017-18 Graduates

Select Rate:  
4 Year Rates

Graduated within 4 Years      Graduated in 5th Year      Graduated in 6th Year      Dropout Rate      GED/Other Completion Rate      Retention Rate

74.9%      15.6%      1.3%      8.2%

- Graduated within 4 Years
- Graduated in 5th Year
- Graduated in 6th Year
- Dropout Rate
- GED/Other Completion Rate
- Retention Rate

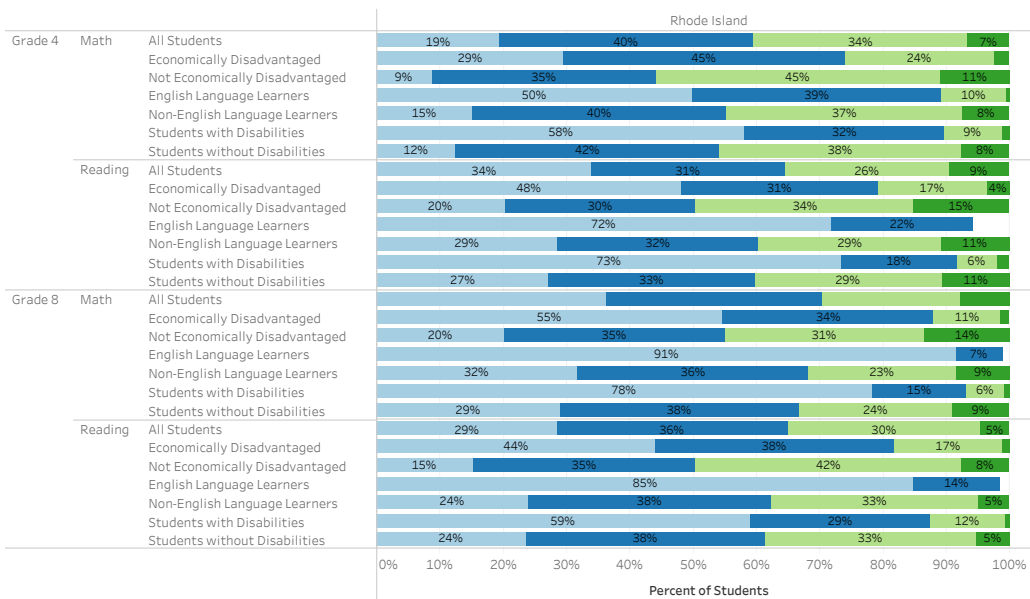


## 2019 National Assessment of Educational Progress (NAEP) Performance and Participation

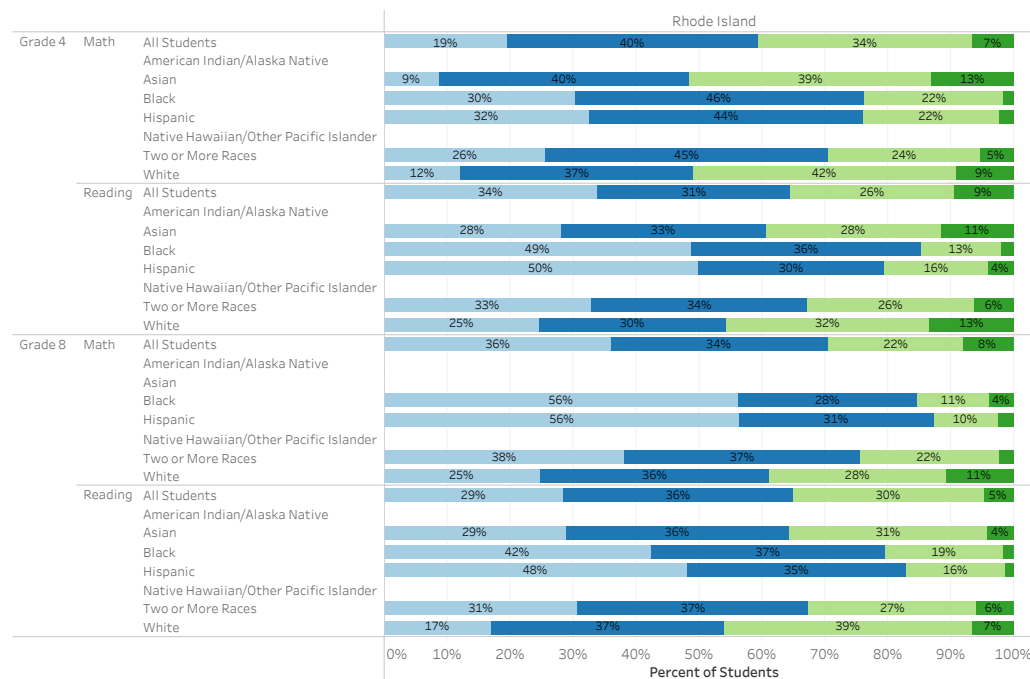
**Proficiency Level**

- Below Basic
- Basic
- Proficient
- Advanced

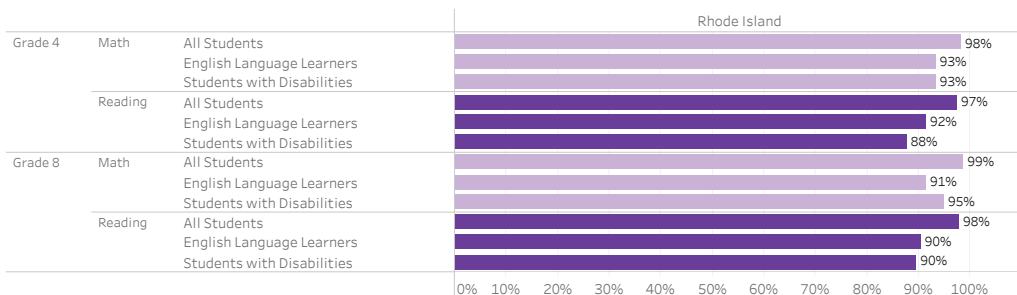
### Student Performance for 2019 by Group



### Student Performance for 2019 by Ethnicity



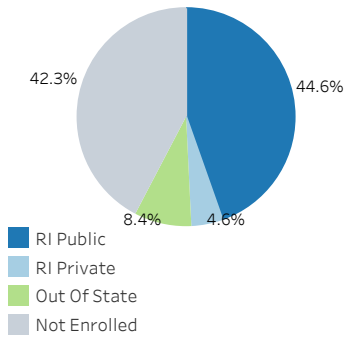
### Student Participation for 2019



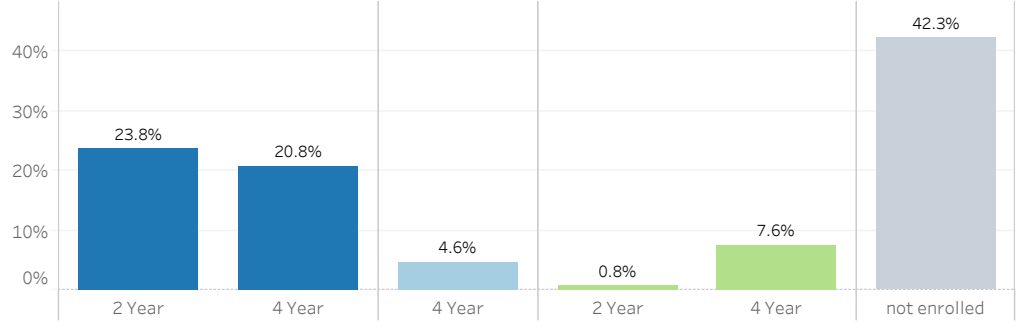
NAEP is the largest nationally representative and continuing assessment of what America's students know and can do in various subject areas. Data displayed are for National Public schools. Graphs with no data indicate that NAEP reporting requirements were not met for that subgroup and therefore data are not displayed.

## Providence Rates of Postsecondary Enrollment Within 1 Academic Year for 2017-18 Graduates

Type of Postsecondary Enrollment

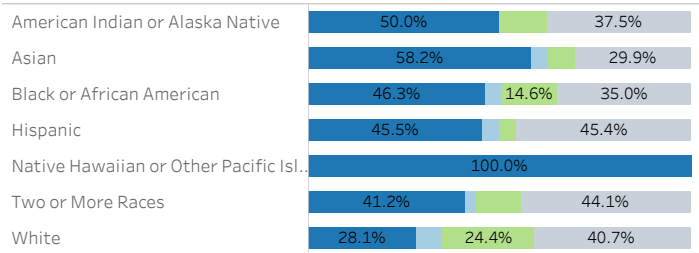


Enrollment by Degree Type

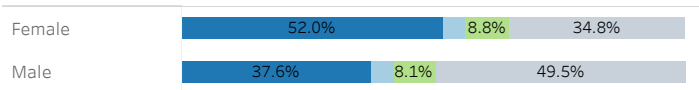


### Student Subgroups

#### Race/Ethnicity

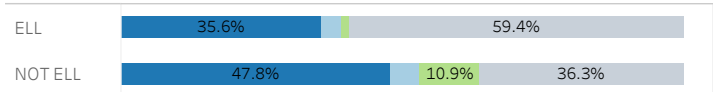


#### Gender

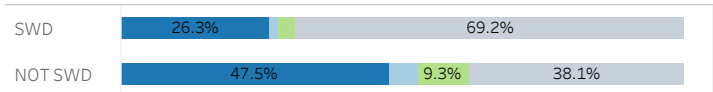


RI Public RI Private Out Of State Not Enrolled

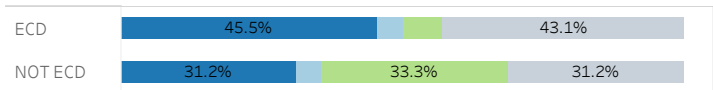
#### English Language Learner



#### Students With Disabilities



#### Economically Disadvantaged



Data: Postsecondary enrollment rates include all students who graduated and then enrolled in a program of postsecondary education within 1 year of graduation.

Data Source(s): Graduates: Rhode Island Department of Education, Postsecondary Enrollment: National Student Clearinghouse